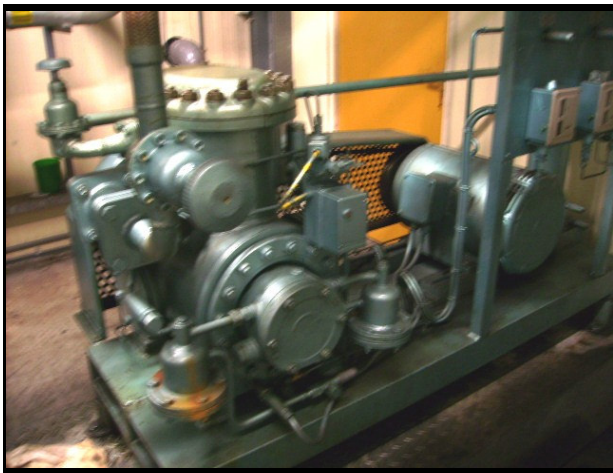
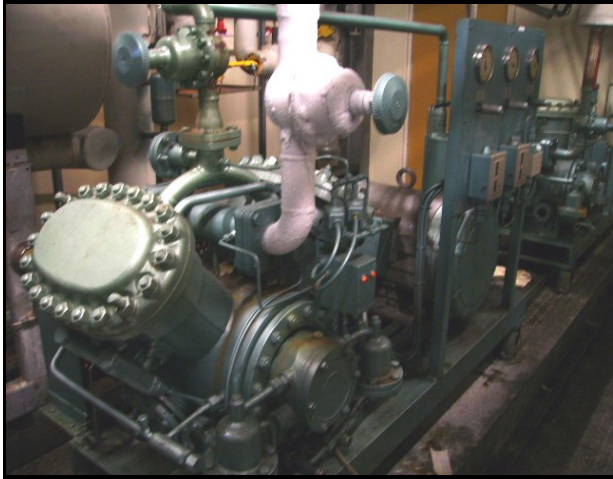

One (1) NH3 pumpsystem with a capacity of 200kW at –10C /+40C

One (1) evaporator vessel Witt with a content of 800 kg. Wth 2 refrigerant pumps Hermetique CAM 3 kW. One (1) liquid sub cooler Witt with a content of 745 ltr. The complete electric control panels.



Product 1156-0
code:
Brand: Grasso
Type: RC 29
Refrigerent: NH3
**Open/direct/
semi
hermetic:** Open
Remarks: Comes with steel base
frame Electricmotor 18.5
kW Gauges pressure
panel Hp/Lp/Op
Pressure safety panel
Hp/Lp/Op Oilseparator
Capacity control

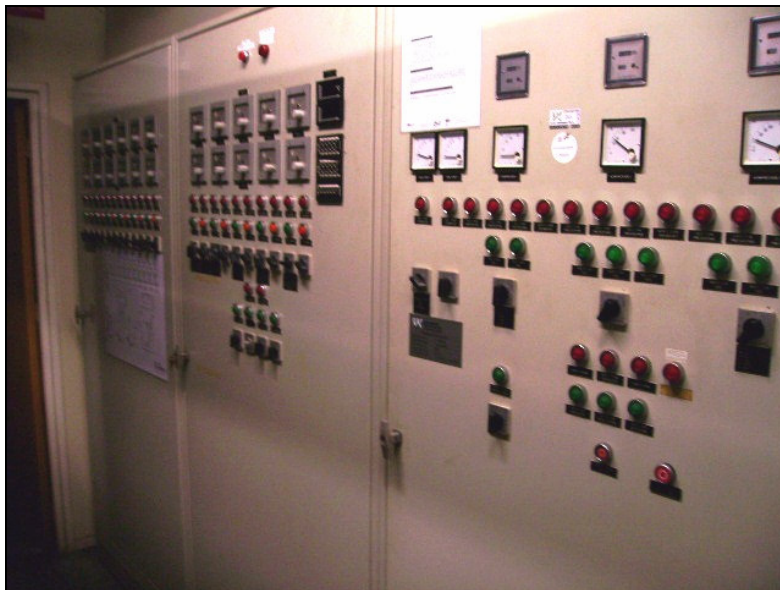
1 piece included.



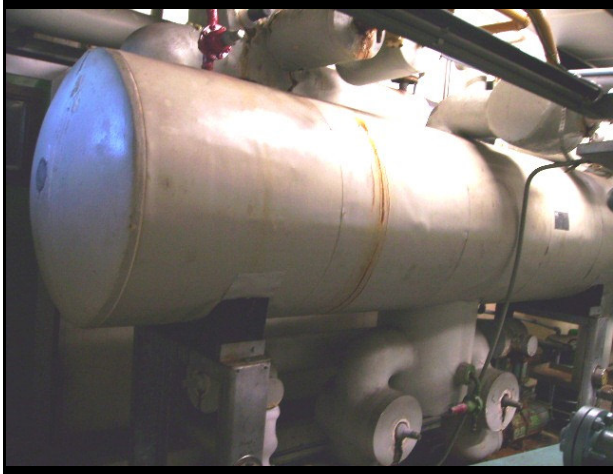
Product code: 1155-0
Brand: Grasso
Type: RC 49
Refrigerent: NH 3
Open/direct/semi hermetic: Open
Remarks: comes with steel baseframe-electricmotor 37 kW, quard hood - pressure gauge panel Hp/IP/Op and pressure safety switches Hp/Lp/Op, Oilseparator - Capactiy Control



2 pieces included.



Complete with Control / Switch panel.



Product code: 1158-0
Brand: van Kempen
Type: NH3 pumpsystem capacity 800 kg
Remarks: Pumpsystem, commites by stocknum. 1155+1155-1 1156+1157 Vessel comes with 2 pumps Hermetique CAM /3 kW. Valves and a liquid-level system Witt

1 piece included



Brand: Goedhart
Type: 90L/2x2-6P
Serial: 97-51500-01